

Spray guns & lances

08

1. Low and medium pressure spray guns

RB35 cone jet spray gun



Low pressure spray gun with variable cone jet and Stainless steel 360° swivel connection.

Reference: 140.003
Inlet 1/4" F sw.
Out Cone nozzle
Rated Pressure 12 bar
Rated Temperature 80°C
Rated Flow Rate 50 Lpm.
Accessory type •

Heavy duty spray head



Stainless steel spray adjustable spray head with plastic housing

Reference: 140.AKRSH02
Inlet 1/4" F
Out Cone nozzle
Rated Pressure 16 bar
Rated Temperature 80°C
Rated Flow Rate 150 Lpm.
Accessory type •

Shower head



Stainless steel with plastic housing shower head.

Reference: 500101
Inlet 1/4" F
Out Shower
Rated Pressure 8 bar
Rated Temperature 60°C
Rated Flow Rate 50 Lpm.
Accessory type •

Isolated ball valve



Stainless steel isolated ball valve. Full passage.

Reference: 140.112
Inlet 1/4" F
Out 1/2" F
Rated Pressure 60 bar
Rated Temperature 90°C
Rated Flow Rate 100 Lpm.
Accessory type •

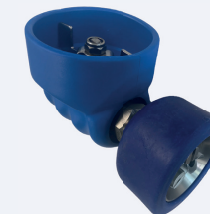
Isolated ball valve with ST3100 quick coupling



Stainless steel isolated ball valve. Full passage. With nozzle adapter. Nozzles not included.

Reference: 140.114
Inlet 1/4" F
Out ST3100 QC.
Rated Pressure 60 bar
Rated Temperature 90°C
Rated Flow Rate 100 Lpm.
Accessory type •

Isolated ball valve with triple click nozzle



Low pressure spray gun with Stainless steel triple click nozzle and 360° swivel connection.

Reference: 140.113
Inlet 1/4" F
Out Triple click
Rated Pressure 24 bar
Rated Temperature 90°C
Rated Flow Rate 100 Lpm.
Accessory type •

RB65 cone jet spray gun



Low pressure spray gun with variable cone jet and 360° swivel connection.

Reference: 140.005
Inlet 1/4" F sw.
Out Cone nozzle
Rated Pressure 24 bar
Rated Temperature 90°C
Rated Flow Rate 60 Lpm.
Accessory type •

RB65 with ST3100 quick coupling



Low pressure spray gun with ST3100 quick coupling and 360° swivel connection. Nozzles not included.

Reference: 140.022
Inlet 1/4" F
Out ST3100 QC.
Rated Pressure 24 bar
Rated Temperature 90°C
Rated Flow Rate 100 Lpm.
Accessory type •

RB65 with triple click nozzle



Low pressure spray gun with Stainless steel triple click nozzle and 360° swivel connection.

Reference: 140.021
Inlet 1/4" F
Out Triple click
Rated Pressure 24 bar
Rated Temperature 90°C
Rated Flow Rate 100 Lpm.
Accessory type •

ST3225 gun with progressive closing and ST3100 quick coupling



Stainless steel lockable gun with advantages from spray gun and ball valve. Nozzles not included.

Reference: 203225650
Inlet 1/2" F
Out ST3100 QC
Rated Pressure 60 bar
Rated Temperature 100°C
Rated Flow Rate 100 Lpm.
Accessory type •

ST3100 spray gun with ST3100 quick coupling



Stainless steel spray gun progressive closing and nozzle adapter. Nozzles not included.

Reference: 203100820
Inlet 1/2" F
Out ST3100 QC.
Rated Pressure 60 bar
Rated Temperature 150°C
Rated Flow Rate 100 Lpm.
Accessory type •

ST2720 spray gun with ST3100 quick coupling



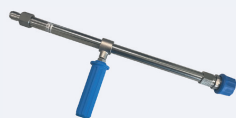
Stainless steel spray gun with LTF technology and 360° swivel connection. Nozzles not included.

Reference: 202720550
Inlet 1/2" F
Out ST3100 QC
Rated Pressure 125 bar
Rated Temperature 150°C
Rated Flow Rate 80 Lpm.
Accessory type •

quick & variable

2. Low pressure lances and nozzles

Extensions



Stainless steel lance extension with ST3100 nipple and quick coupling.

Reference 400mm :	30.6456.40X
Reference 800mm	30.6456.80X
Inlet	ST3100 nipple
Out	ST3100 QC
Rated Pressure	100 bar
Rated Temperature	150°C
Accessory type	•

Foam lance



Stainless steel foam lance with ST3100 nipple and foam nozzle 50/200.

Reference:	203100630
Inlet	ST3100
Out	Nozzle 50/200
Rated Pressure	150 bar
Rated Temperature	150°C
Accessory type	•

Triple click XL



Stainless steel short lance with triple click nozzle and ST3100 nipple.

Reference:	140.145XL
Inlet	ST3100
Out	Triple click
Rated Pressure	150 bar
Rated Temperature	100°C
Accessory type	•

High flow POM lance with valve



Stainless steel Ball valve with POM high flow foam lance. Perfect in combination with Foamatron

Reference :	140.184
Inlet	¼" F BSP
Foam nozzle	50/350
Rated Pressure	10 bar
Rated Temperature	40°C
Accessory type	•

Chemical spray lance



Stainless steel lance with Spray gun equipped with AISI316 ball resistant to chemicals.

Reference:	200510550
Inlet	½" F BSP
Out	Nozzle
Rated Pressure	25 bar
Rated Temperature	50°C
Accessory type	•

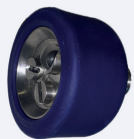
Gun for liquid transfer



Liquid transfer gun with trigger lock. PA, stainless steel and Viton seal.

Reference:	140.090
Inlet	1" swivel
Rated flow	90 liter
Rated Pressure	5 bar
Rated Temperature	60°C
Accessory type	•

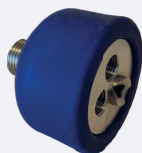
Triple click nozzle



By easily turning the head there are 3 nozzles selectable. Foam, rinse, disinfect for food industry.

Reference:	140.145
Inlet	½" M BSP
Out	50*150 15*30 25*50
Rated Pressure	150 bar
Rated Temperature	150°C
Accessory type	•

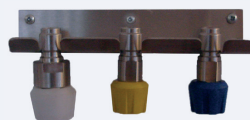
Triple click nozzle with 2 holes and foam nozzle



By easily turning the head there are 2 nozzles selectable ¼" NPT and 1 prefixed Foam nozzle.

Reference:	140.148
Inlet	½" M BSP
Out	50*150 ¼" F NPT ¼" F NPT
Rated Pressure	150 bar
Rated Temperature	150°C
Accessory type	•

Nozzles with ST3100 nipple



Stainless steel interchangeable nozzles for food industry. Foam, Disinfect and rinse.

Colour/ Nozzle Type	Reference
White 50/200	140.155
Yellow 25/50	140.160
Bleu 15/30	140.165
Stainless steel holder	140.655
Rated Temperature	100°C
Accessory type	•



3. High pressure spray guns

ST2700 Spray gun



Stainless steel high pressure spray gun with LTF technology.

Reference:	202700500
Inlet	3/8" F
Out	1/4" F
Rated Pressure	310 bar
Rated Temperature	150°C
Rated Flow Rate	45 Lpm.
Accessory type	•

ST2700 with ST3100 quick coupling



Stainless steel high pressure spray gun with LTF technology. Equipped with ST3100 QC and 360° swivel.

Reference:	202700500X
Inlet	3/8" F
Out	ST3100 QC.
Rated Pressure	310 bar
Rated Temperature	150°C
Rated Flow Rate	45 Lpm.
Accessory type	•

ST2720 with KW quick coupling



Stainless steel high pressure spray gun with LTF technology. Equipped with KW QC and 360° swivel.

Reference:	202700575
Inlet	3/8" F swivel
Out	KW QC
Rated Pressure	310 bar
Rated Temperature	150°C
Rated Flow Rate	45 Lpm.
Accessory type	•

4. High pressure lances

Bleu stainless steel lance with dynamic foam nozzle, suitable for all Click & clean HPJET systems.

Equipped with integrated air injector it creates foam without the need of compressed air



Reference	Materials	Length mm	Inlet	Out	Max. press.	Max. temp	Type
200075572X	St. steel	600	KW nipple	Foam nozzle	250bar	150°C	•

Push & pull heatproof lance with KW nipple and nozzle protector.

Pressure nozzles available from 20 – 400 bar



Reference	Materials	Length mm	Inlet	Out	Max. press.	Max. temp	Type
200085610	St. steel	900	KW nipple	1/4" NPT	400bar	150°C	•

Black heatproof lance with KW nipple and nozzle protector. Pressure nozzles available from 20 – 400 bar – mainly used in food industry as high pressure rinse lance for outside cleaning applications under high pressure 200bar



Reference	Materials	Length mm	Inlet	Out	Max. press.	Max. temp	Type
200028309xkw	St. steel	900	KW nipple	1/4" NPT	400bar	150°C	•

Black turbo heatproof lance with KW nipple and turbo rotating nozzle.

200029309xtb (depending flow value)



Reference	Materials	Length mm	Inlet	Out	Max. press.	Max. temp	Type
200029309xtb	St. steel	900	KW nipple	1/4" NPT	400bar	150°C	•

Green heatproof lance with KW nipple and nozzle protector. Pressure nozzles available from 20 – 400 bar – mainly used in food industry as 40 bar rinse lance in combination with Click & clean HPJET units.



Reference	Materials	Length mm	Inlet	Out	Max. press.	Max. temp	Type
200029317xkw	St. steel	900	KW nipple	1/4" NPT	400bar	150°C	•

Blue heatproof lance with KW nipple and nozzle protector. Pressure nozzles available from 20 – 400 bar – mainly used in food industry as 20 bar rinse lance in combination with Click & clean HPJET units.



Reference	Materials	Length mm	Inlet	Out	Max. press.	Max. temp	Type
200029315xkw	St. steel	900	KW nipple	1/4" NPT	400bar	150°C	•

Red heatproof lance with KW nipple and nozzle protector. Pressure nozzles available from 20 – 400 bar – mainly used in food industry as 80 bar rinse lance in combination with Click & clean HPJET units.



Reference	Materials	Length mm	Inlet	Out	Max. press.	Max. temp	Type
200029318xkw	St. steel	900	KW nipple	1/4" NPT	400bar	150°C	•

Yellow heatproof lance with KW nipple and nozzle protector. Pressure nozzles available from 20 – 400 bar – mainly used in food industry as 5bar non foaming spray disinfection lance in combination with Click & clean HPJET units.



Reference	Materials	Length mm	Inlet	Out	Max. press.	Max. temp	Type
200029316xkw	St. steel	900	KW nipple	1/4" NPT	400bar	150°C	•