



360° SELF ROTATING CLEANING HEAD



- This is a self-propelled tank cleaning head: when the flow rate increases, the head rotates faster.
- Cleaning of interior surfaces of tanks and drums.
- Reduced flow, high pressure, high cleaning impact.
- Complete orbital coverage of all interior surfaces.
- Rotating speed independent from water temperature.
- Inlet filter.
- Stainless steel construction.
- Suitable for utilization in food industry.

ATTENTION!

- The STANDARD Tank cleaning head is supplied with seals (DYNAMIC) in PTFE + O-Ring EPDM.
- Lubricate ONLY with SILICONE GREASE P/N: 14.6552.00.
- For use with Detergent liquid, Chemical additives etc. that are not compatible with the standard seals, it is essential to contact our TECHNICAL OFFICE for further information.
- On request, the O-RING seals (DYNAMIC) are available in different materials such as NBR-FFKM(kalrez)- FKM(viton).
- The STATIC seals are in FKM (viton).

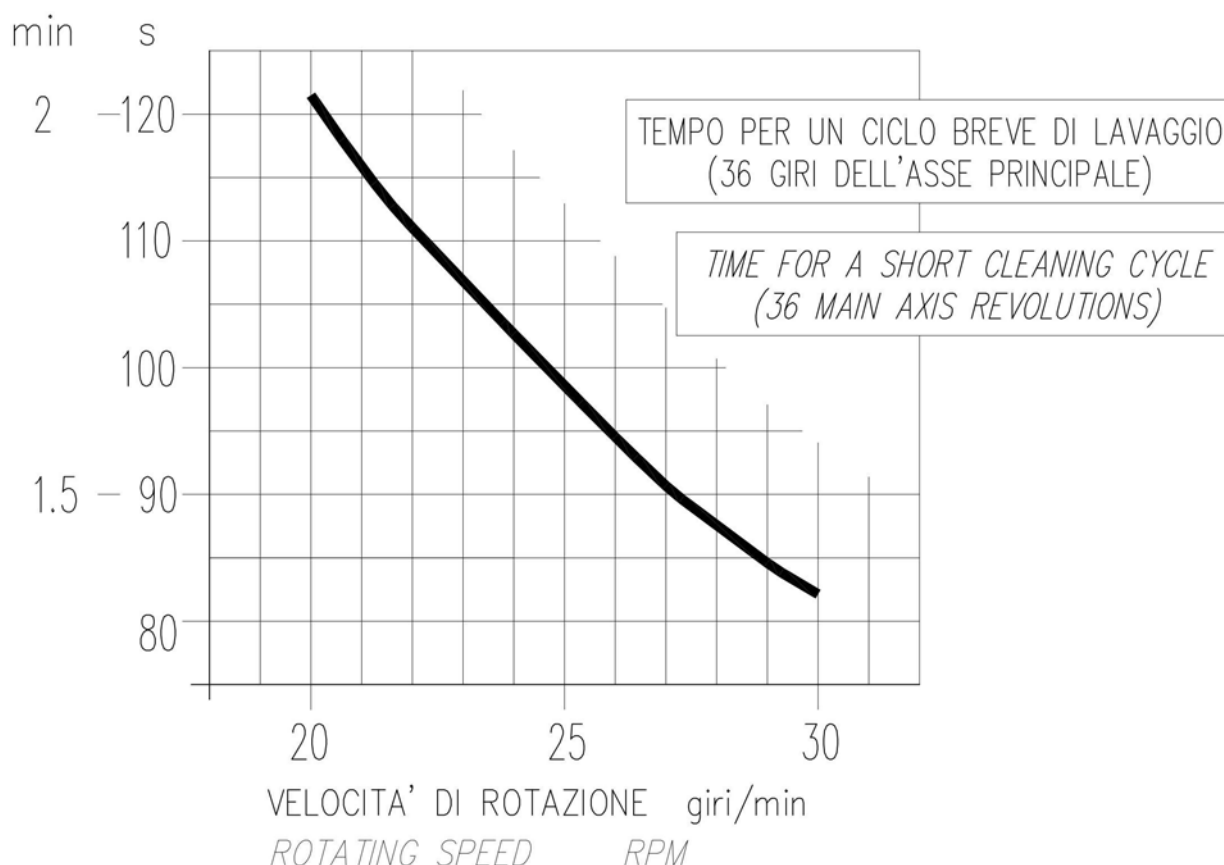
Overall Dimensions





Technical data

Rated pressure	40 - 140 bar - 4 - 14 Mpa (580 - 2000 psi)
Permissible pressure	160 bar - 16 Mpa (2300 psi)
Max flow rate	10 - 30 L/min (2,6 - 8 USG p.m.)
Max working temperature	0 - 90° C (32 - 195° F) The head is designed for continuous use with water at a temperature of 60° C. It can work for short periods with water at a maximum temperature of 90° C.
Weight	2,03 Kg (71,61 oz.)
Main axis rotating speed	20 - 30 giri/min (RPM)
Inlet connection size	G 1/2"
Inlet filter	400 µm
Nozzle connection (2 o 4)	M4



MAINTENANCE

Maintenance has to be carried out by Specialized Technicians.

STANDARD: every 400 working hours (circa 10,000 cycles), check and lubricate the seals with water resistant grease.

SPECIAL: every 800 working hours (circa 20,000 cycles), control the wear of the seals and internal parts and if necessary, replace with original PA parts taking care during installation and to lubricate with water resistant grease.



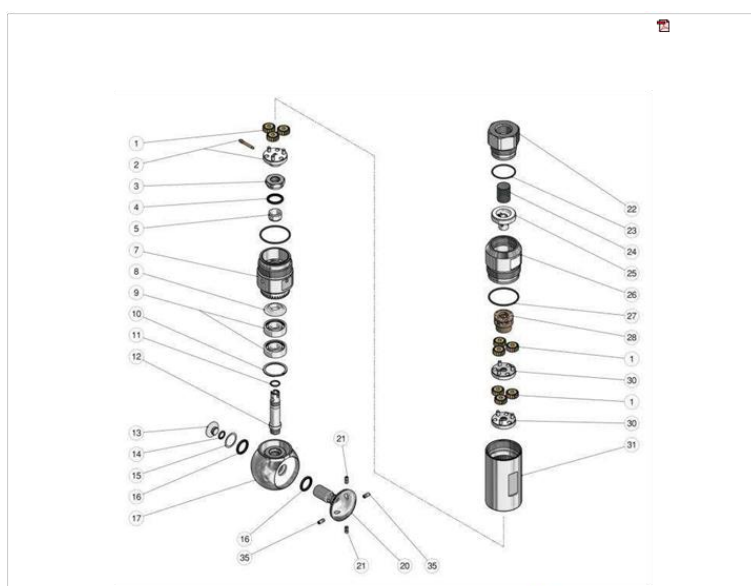
The manufacturer is not to be considered responsible for damage as a result from incorrect fitting and maintenance. Regulations:

For proper use, follow the warnings contained in this manual and refer to the Machine Operation and Maintenance manual.

For regularity, request the original Declaration of Conformity for the component adopted. This manual is valid for all types of washing heads named **A30R**.

Technical data, descriptions and illustrations are indicative and liable to modification without notice.

Exploded view





Part list

- 1 80.0610.38 Planetary gear,
- 2 80.0617.21 Planetary gear holder+3 pins, Sst.+1 pin
- 3 80.0504.51 Ring nut, M12x1 Sst.
- 4 10.2035.16 Seal, 16x21x2,1 mm+Or.iVit.
- 5 80.0509.51 Seal holding bushing, Sst.
- 7 80.0619.51 Fixed rest, Sst.
- 8 80.0550.51 Sst. spacer ring, 12,3x27,5 mm
- 9 11.4412.28 Ball-bearing, 12x28x8 mm - 2RS1 Sst.
- 10 10.1011.05 Snap ring, I 28 Sst.
- 11 10.3019.10 O-ring, 1,5x9,5 mm Vi 70
- 12 80.0618.51 Propeller shaft, Sst.
- 13 80.0623.51 M10 pin , Sst.
- 14 10.3055.10 O-ring, 1,78x7,66 mm Vi 70
- 15 80.0625.56 Shim ring, 20x16x0,3 mm sst **
- 16 10.2035.00 Stem seal, 15x20x2 mm +O-ring
- 17 80.0620.51 Spherical sst. frame 1
- 20 80.0624.21 Sst spherical nozzle holder, 4x M4
- 21 80.0890.60 Set screw, DIN913 M4 mm Sst.Ai316
- 22 80.0601.51 Inlet coupl., 1/2Bsp F Sst.
- 23 10.3028.10 O-ring, 1,5x27 mm Vi 70
- 24 28.0111.53 Sst strainer 1
- 25 80.0602.51 Pin injector, 2x1,9 mm Sst. (25.3300.12)
- 25 80.0603.51 Pin injector, 2x2,3 mm Sst. (25.3300.15)
- 25 80.0604.51 Pin injector, 2x2,7 mm Sst. (25.3300.18)
- 25 80.0605.51 Pin injector, 3x2,5 mm Sst. (25.3300.25)
- 25 80.0606.51 Pin injector, 4x2,6 mm Sst. (25.3300.33)
- 26 80.0612.51 Sst. inlet flange 1
- 27 10.3079.20 O.ring 1,78 x 34,65 mm Vit.
- 28 80.0609.21 Turbine + planetary shaft, complete
- 30 80.0615.21 Plan. gear holder+3 pins+gear, Sst.
- 31 80.0611.51 Ring gear z.50, 3-stage cleaner, sst.
- 32 80.0545.31 Fuse plug, D.3mm **
- 34 14.6550.00 Teflon grease x30g.>no Epdm **

A30R series:

25.3300.12	A30R Tank clean.,s/prop, 4xM4 12 l/min 1/2Bsp F
25.3300.15	A30R Tank clean.,s/prop, 4xM4 15 l/min 1/2Bsp F
25.3300.18	A30R Tank clean.,s/prop, 4xM4 18 l/min 1/2Bsp F
25.3300.25	A30R Tank clean.,s/prop, 4xM4 25 l/min 1/2Bsp F
25.3300.33	A30R Tank clean.,s/prop, 4xM4-33 l/min 1/2Bsp F

Dosanova bvba
Molstraat 102.1
8770 Izegem Belgium
info@dosanova.com
www.dosanova.com

Tel. 0032.473.71.73.61