



## Mobile Hot-water/ Steam tank washer system for rotating cleaning heads and belt cleaning.

### Plug & play unit equipped with:

- Stainless steel AISI304 construction. Profiles 50x50x2mm.
- Stainless steel brake tank with dry running protection.
  - Automatic pump stop when supply water is to low
- 4 x Stainless steel wheels with 2 x swivel wheels with brake.
- Fully tested motor pump
  - Triplex Pump in oil bath running KT30 – 30liter 20 - 200bar
  - Pressure regulating valve with bypass with TST VRT100 G1/2F - 19MPa and gauge
  - Special electrical box with star-delta starter.
  - Electric motor MEC- 11 KW with elastic coupling and flange
  - Safety Valve PA
  - Thermal Valve
  - 3 x 400V / 50Hz – 39,5Amp – 1450RPM.
- Stainless steel heater
  - burner safety device in case of water lack.
  - Flame control
  - Anti-seizure diesel pump
- Electric cabinet
  - on/off switch
  - hour counter display.
  - Control panel.
- Chemical injection foam cleaning and disinfection
  - Double By pass system with stainless steel ball valves  
Foam chemical, rinse, disinfection selection.
  - Air free foaming
  - Spray disinfection
  - Clear water rinse.
  - Stainless steel canister support 2 x 25 liter.
- Stainless steel self-retracting automatic hose reel.
  - Automatic hose reel with 100 meter ½" wash-down hose.
  - 100 meter 2SN wash-down hose.
- Spray guns & lances
  - Stainless steel spray gun with KW quick coupling for switching between lances.
  - Stainless steel rinse lance.
  - Stainless steel dynamic foam lance for air free foaming.
  - Stainless steel disinfection lance.
  - Stainless steel lance holder.





The mobile tank cleaner unit is specially designed for the cleaning of the inside of tanks, IBC's, and other difficult places to reach where a rotating cleaning head can.

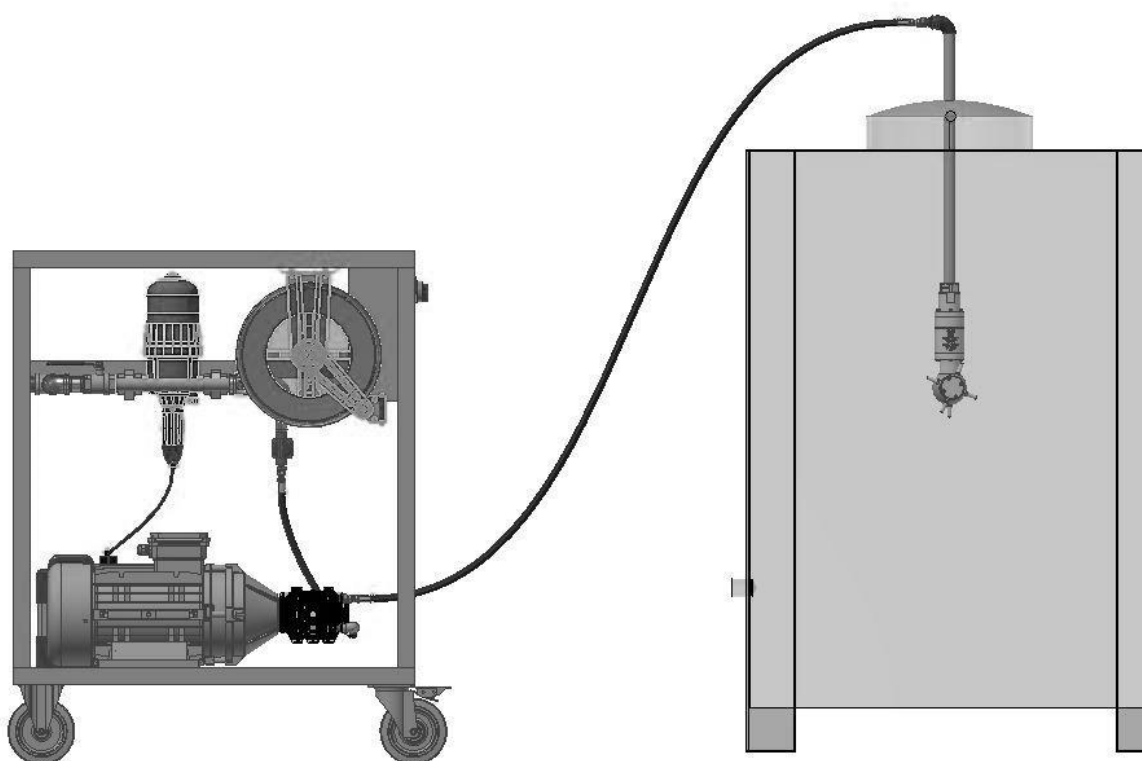
Next to tank cleaning the unit can also be used as a automatic belt cleaner or heavy duty washing station for external cleaning with foam and disinfection options.

The hose reel on the unit contains 100 meter wash-down hose. This length is for applications where the unit is outside the building because of the exhaust gases of the burner is not acceptable.

#### Technical data:

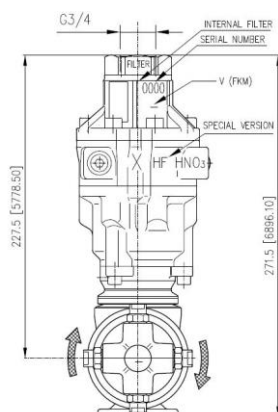
Type	Ref. 110.150
Water supply:	G ¾"
Minimal water supply:	40 litre /minute
Water temperature maximal burner:	150°C.
Automatically shut off pressure when water level is to low:	Yes
Electrical supply:	3 x 400V / 50Hz
Power:	11kW
Functions:	<ul style="list-style-type: none"> <li>• Foam cleaning</li> <li>• Disinfection</li> <li>• Clear water rinse</li> </ul>
Dosing ratio foam cleaning:	0,5 – 15%
Dosing ratio Disinfection:	0,5 - 15%
Length was down hose from unit:	100 meter.
Adjustable work pressure	20 - 200bar
Max. water flow:	30 litre

#### Example connection to rotating nozzle in tank





## Accessories tank cleaning:



### A80LU

#### Rotating Nozzles and Tank Cleaner

This is a self-propelled tank cleaning head: when the flow rate increases, the head rotates faster.

Reduces flow, high pressure, high cleaning impact.

Complete orbital coverage of all interior surfaces.

Inlet filter

Stainless steel construction

Suitable for utilisation in food industry.

Rotating on brushings made of self-lubricating plastic material.

Turbine rotating and sliding held on a temperate steel pin.

Suitable for use with chemicals containing nitric acid (HNO<sub>3</sub>) and hydrofluoric acid (HF)

#### Technical data

Reference:	25.4860.50
Inlet	¾" F
Water pressure:	30 - 140bar
Flow rate:	60 – 70 litre /min.
Max temperature:	0 – 90°C
Weight:	6 kg.
Rotating speed:	10 – 20 giri/min.
Time for a complete cleaning cycle:	47 main axis revolutions



### A30R

This tank cleaner is used when tanks need multi cleaning heads on different places when 1 rotating nozzle can't reach all surfaces (tanks with agitator).

This is a self-propelled tank cleaning head: when the flow rate increases, the head rotates faster.

Reduces flow, high pressure, high cleaning impact.

Complete orbital coverage of all interior surfaces.

Inlet filter

Stainless steel construction

Suitable for utilisation in food industry.

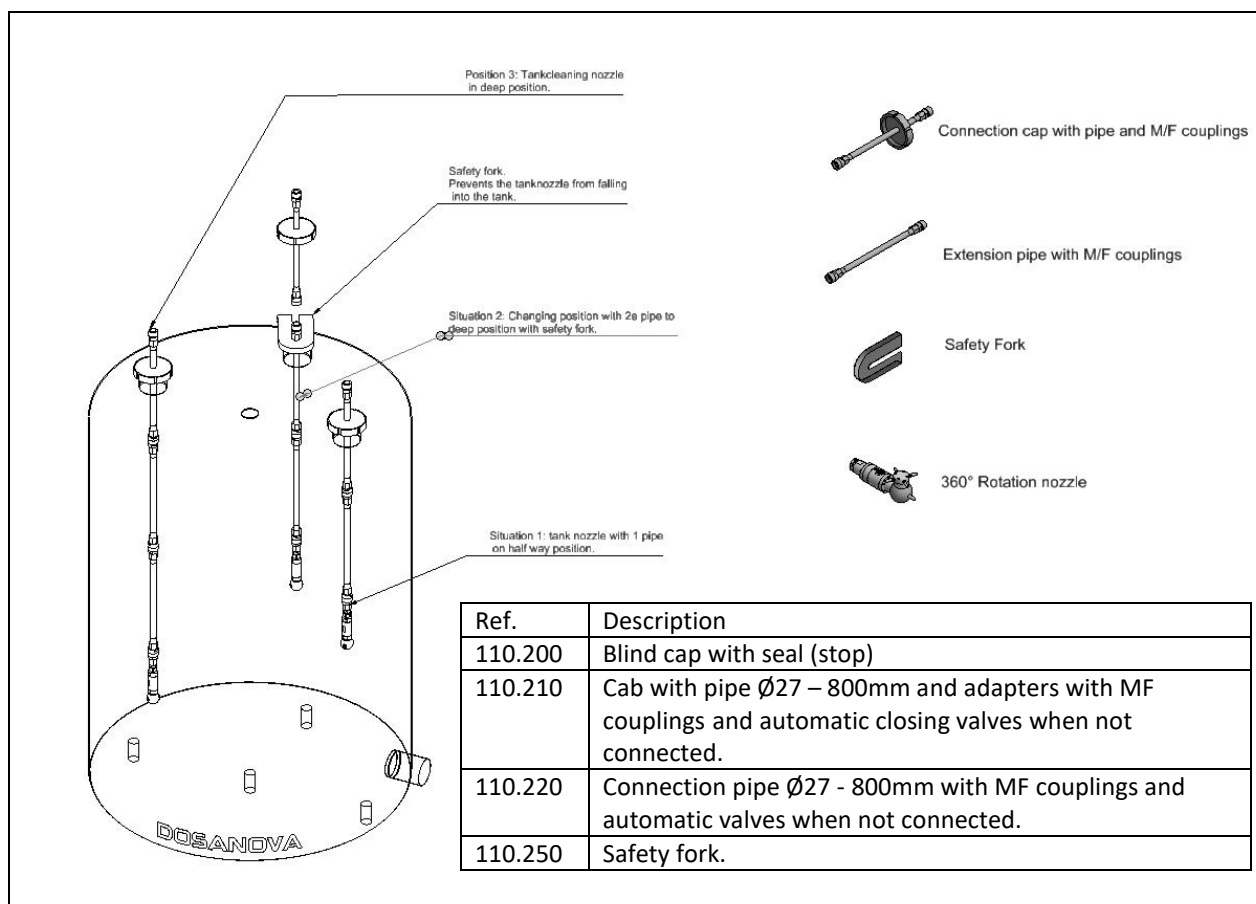
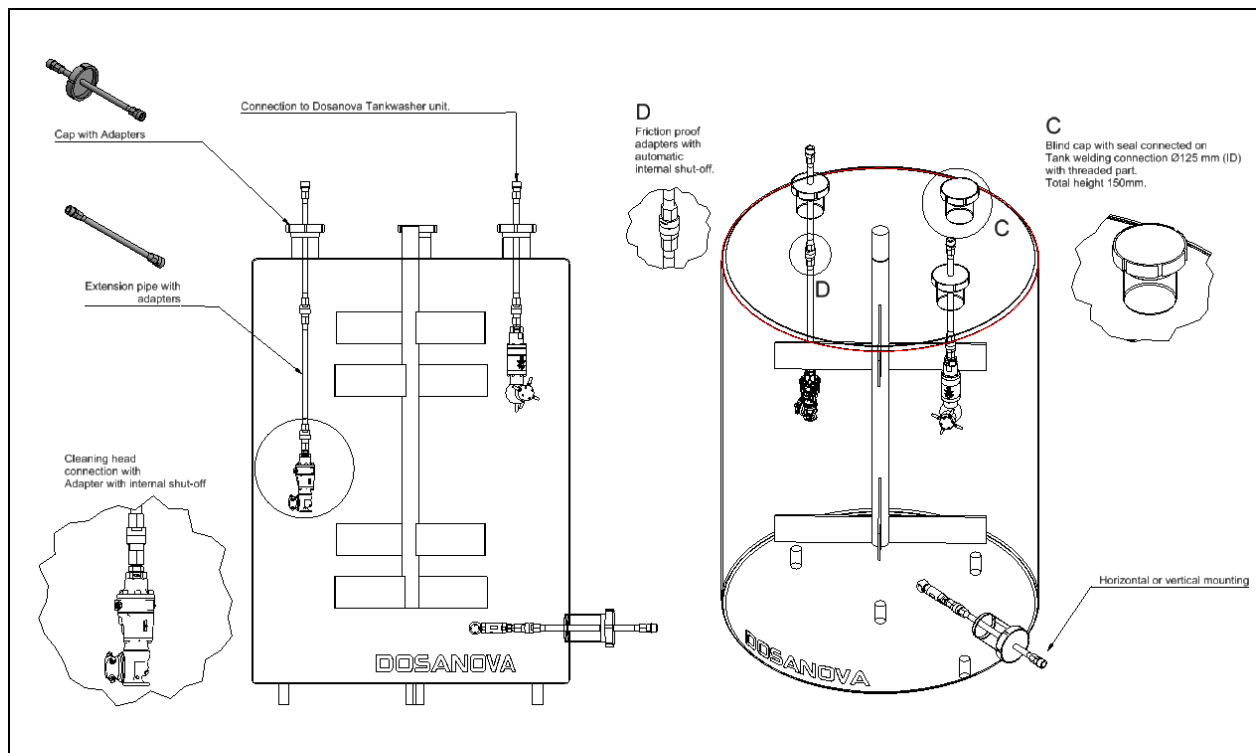
Rotating on brushings made of self-lubricating plastic material.

#### Technical data

Inlet	1/2F		
Water pressure:	30 - 140bar		
Flow rate types:	Ref.	25.3300.12	9 – 12 lpm
	Ref.	25.3300.15	11 - 15 lpm
	Ref.	25.3300.18	14 – 18 lpm
	Ref.	25.3300.25	18 – 25 lpm
	Ref.	25.3300.33	25 – 33 lpm
Max temperature:	0 – 90°C		
Weight:	6 kg.		
Rotating speed:	20 – 30 giri/min.		
Time for a complete cleaning cycle:	47 main axis revolutions		



## Example rotating cleaning heads for tank cleaning.



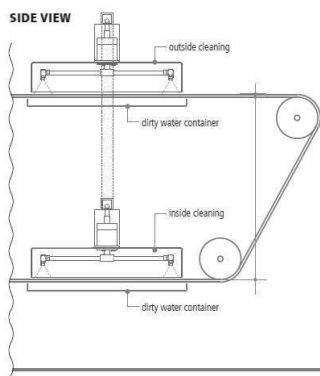
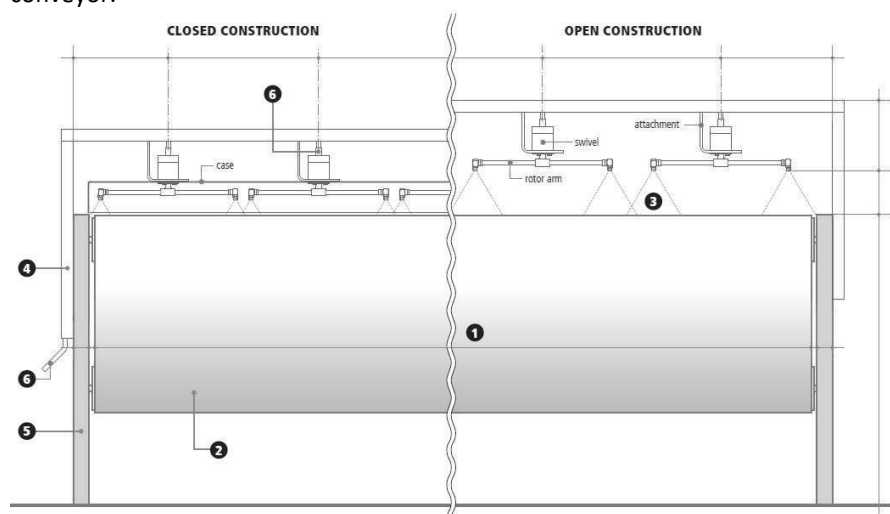
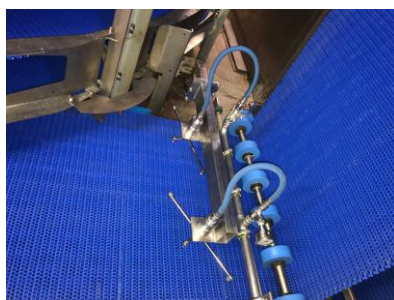


## Accessories for belt cleaning:

### Custom made belt cleaning system.

The system is equipped with 1 or more 360° rotating arms who will start turning by water power.

This hydraulic rotor arm is equipped with 4 nozzles that pass above the moving surface several times in different angles to reach every part of the passing conveyor.






The installation can be placed horizontal, vertical or upside down.

The system is maintenance free and self-lubricating.

The system can be fixed or delivered on a mobile skid to remove the belt cleaner to another place.

We recommend to blow out fixed unit with compressed air when the system is installed in a  $-0^{\circ}\text{C}$  application.

## Accessories for manual use:

Stainless steel spray gun with KW quick coupling.	Stainless steel Rinse lance with KW nipple and nozzle protection.	Stainless steel dynamic foam lance with KW nipple. Creates foam without compressed air.
		
Ref. 202700575	Ref. 511505901	Ref. 200075572X