



Mobile tank washer system for rotating cleaning heads.

Reducing water consumption with 75% against CIP cleaning with higher results.



Plug & play unit equipped with:

- Stainless steel AISI304 construction. Profiles 50x50x2mm.
- Dry running protection.
 - Automatic pump stop when supply pressure is less than 1.5bar.
- Adjustable timer for foaming and cleaning process
- Solenoid valve 24V.
 - Shut down when installed time is finished.
- Stainless steel canister support 2 x 25 liter.
- 4 x Stainless steel wheels with 2 x swivel wheels with brake.

- Fully tested motor pump
 - Triplex Pump in oil bath running KT30 – 80liter 175bar
 - Pressure regulating valve with bypass with TST VRT100 G1/2F - 19MPA and gauge
 - Special electrical box with star-delta starter.
 - Electric motor MEC180- 22 KW in IE3 MEC180 with elastic coupling and flange
 - Safety Valve PA
 - Thermal Valve
 - 3 x 400V / 50Hz – 39,5Amp – 1450RPM.

- Electric cabinet
 - on/off switch
 - adjustable timer with display in contact with solenoid valve who shuts down the pump when timer is 0.
 - Transformer to 24V.
 - Emergency switch with special relay's
 - Amplifier remote control and receiver

- Double By pass system with stainless steel ball valves Foam chemical, rinse, disinfection selection.

- 2 x Hydraulic dosing injector
 - Max. 8m³/h.
 - Dosing ratio: 0.2 – 2% and 0.5 – 5%
 - 1 x VF acid
 - 1 x AF Base resistant.
 - Supply pressure 1.5 – 8bar.
 - Max. Supply temperature: 40°C.

- Stainless steel self-retracting automatic hose reel.

- 20 meter Smooth wash down hose with quick connection on rotating cleaning head.

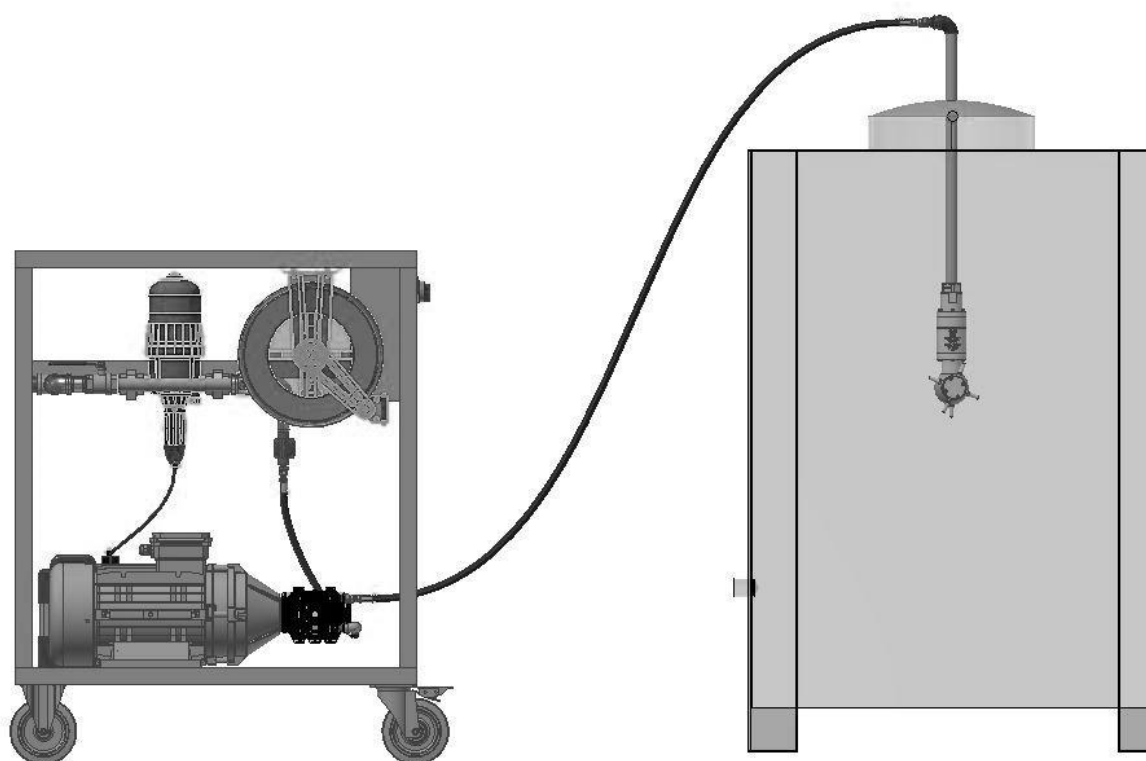


The mobile tank cleaner unit is specially designed for the cleaning of the inside of tanks, IBC's, and other difficult places to reach where a rotating cleaning head can.

Next to tank cleaning the unit can also be used as a automatic belt cleaner or heavy duty washing station for external cleaning with foam and disinfection options.

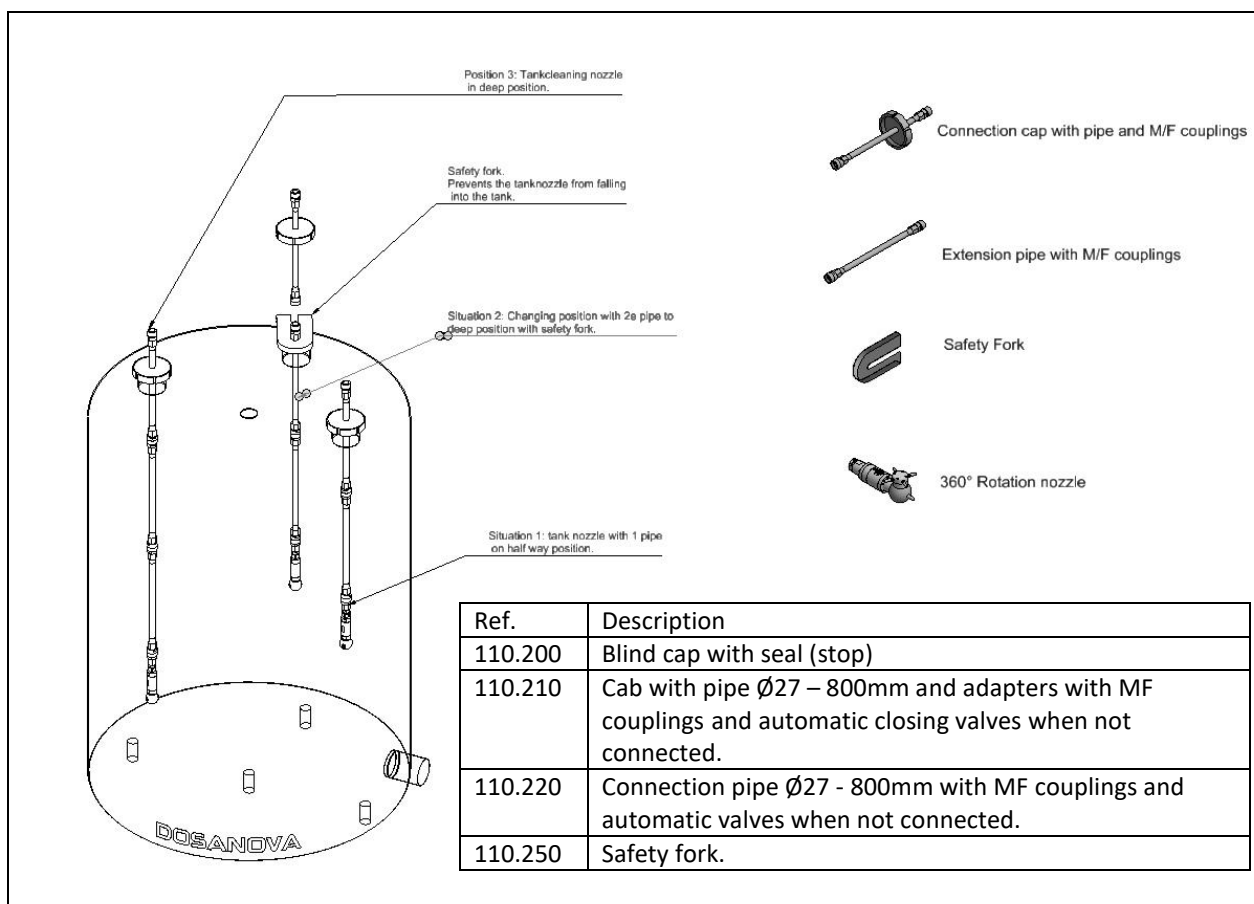
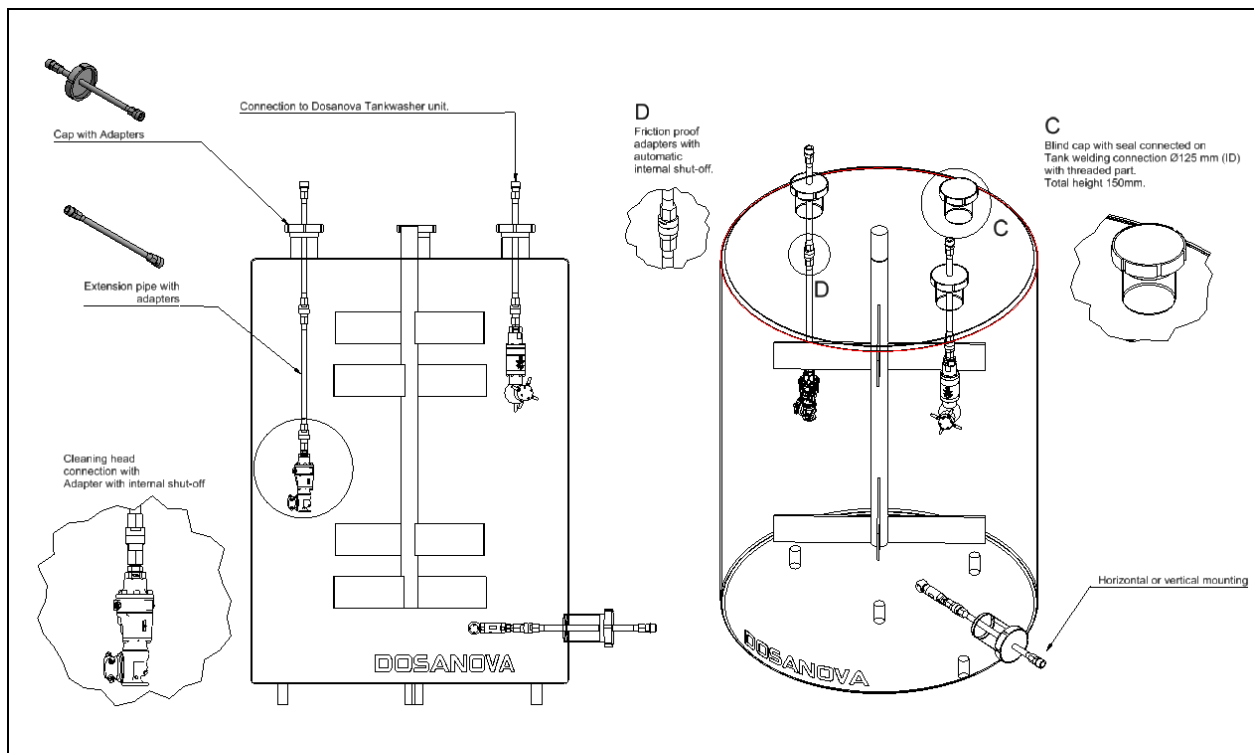
Technical data:

Type	Ref. 110.100 – Type FR	Ref. 110.110 Type FFR
Water supply:	G 1 ¼"	G 1 ¼"
Minimal water supply:	100 litre /minute	100 litre /minute
Water temperature supply:	0 – 40°C	0 – 40°C
Automatically shut off pressure when water pressure is to low:	1,5bar.	1,5bar.
Electrical supply:	3 x 400V / 50Hz	3 x 400V / 50Hz
Power:	22kW / 40 Amp	22kW / 40 Amp
Functions:	<ul style="list-style-type: none"> • Foam cleaning • Clear water rinse 	<ul style="list-style-type: none"> • Foam cleaning • Clear water rinse • Disinfection
Dosing ratio foam cleaning:	0,5 – 5%	0,5 – 5%
Dosing ratio Disinfection:	0,2 – 2%	0,2 – 2%
Length was down hose from unit:	20 meter.	20 meter.
Adjustable work pressure	20 - 175bar	20 - 175bar
Max. water flow:	80 litre	80 litre





Example rotating cleaning heads for tank cleaning.



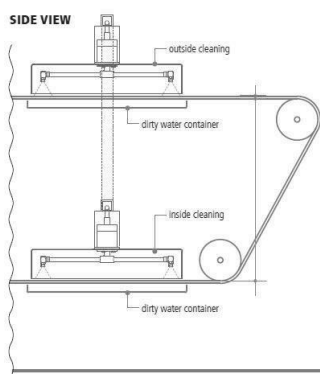
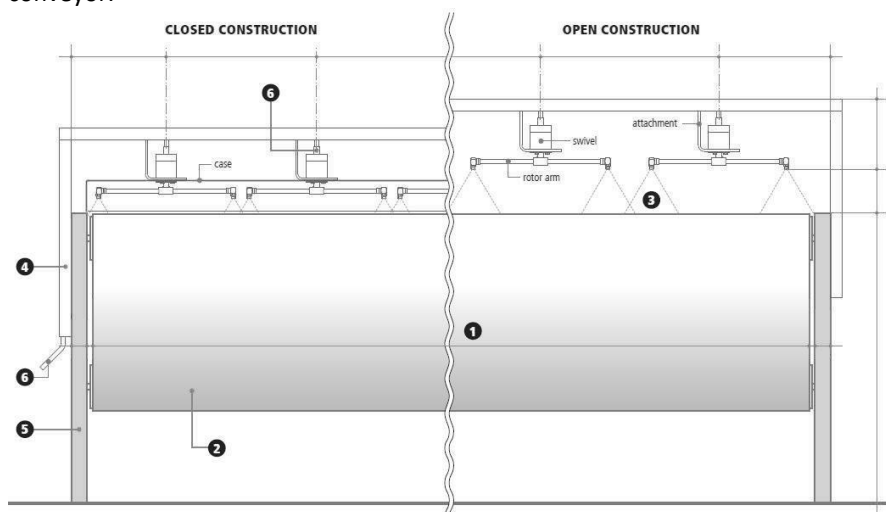
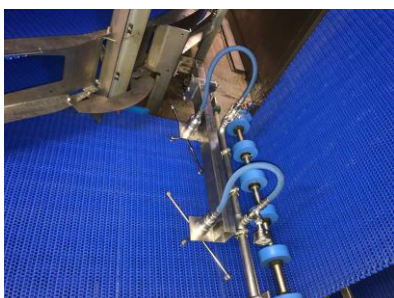


Accessories for belt cleaning:

Custom made belt cleaning system.

The system is equipped with 1 or more 360° rotating arms who will start turning by water power.

This hydraulic rotor arm is equipped with 4 nozzles that pass above the moving surface several times in different angles to reach every part of the passing conveyor.






The installation can be placed horizontal, vertical or upside down.

The system is maintenance free and self-lubricating.

The system can be fixed or delivered on a mobile skid to remove the belt cleaner to another place.

We recommend to blow out fixed unit with compressed air when the system is installed in a - 0°C application.

Accessories for manual use:

<p>Stainless steel spray gun with KW quick coupling.</p>	<p>Stainless steel Rinse lance with KW nipple and nozzle protection.</p>	<p>Stainless steel dynamic foam lance with KW nipple. Creates foam without compressed air.</p>
		
<p>Ref. 202700575</p>	<p>Ref. 511505901</p>	<p>Ref. 200075572X</p>